

## LS-81T

The LS-81T of LDA is a acoustic box, which is compound by a 8" high performance woofer and a 1" tweeter made of Polycarbonate.

This acoustic box has been designed for installations where a high quality and medium power are required.

The enclosure of the box is made of ABS of high quality and reduce weight with a black or white textured finished in order to cover the IP protection for environmental conditions: IP-54.

The LS-81T included an adjustable U shape bracket for fixing on wall or ceilings.

The connection is realized by a pressure connector which is located in the rear side of the box. Besides, it includes a power selector for 70/100V lines and 8Ω.



### Features LS-81T:

- High quality playback
- Lineal frequency response: 80 – 20,000 Hz (+/- 5 dB)
- Coherent phase response
- Low harmonic distortion
- Power tap selector and low loss transformer ( 70 / 100V / 8Ω)
- Metallic grille: acoustically transparent

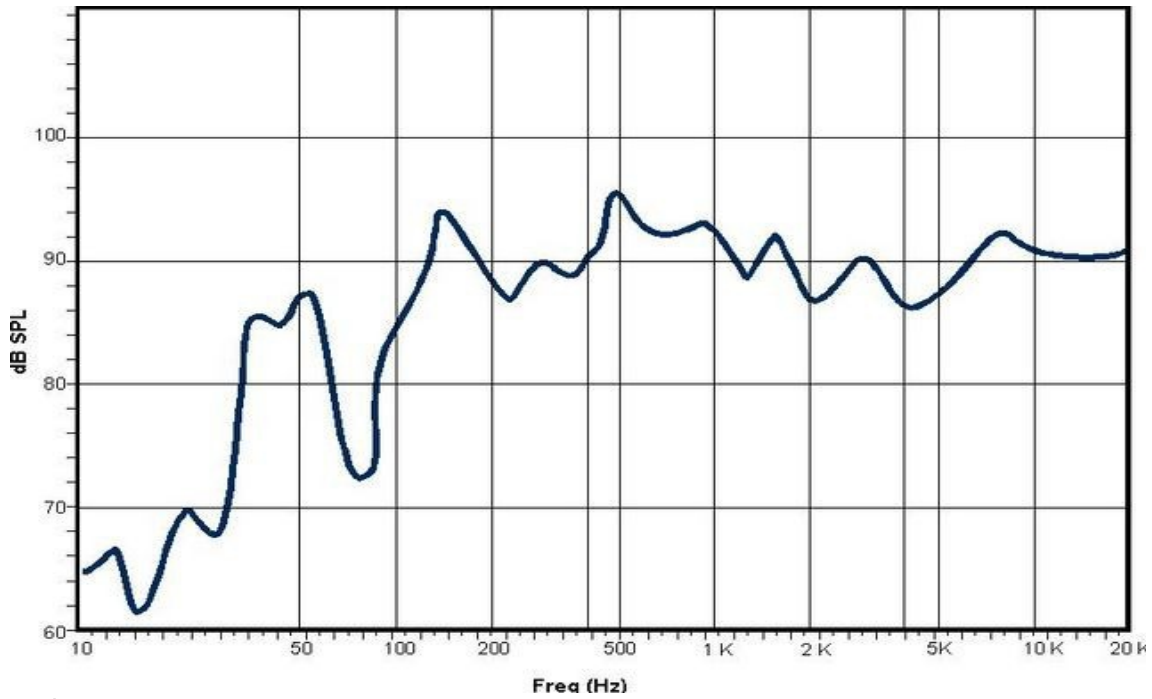
### Technical Specifications:

Model	LDALS81TWS02
Power supply	50 W RMS
Frequency response I/O	80Hz- 20kHz (+/- 10dB)
Sensitivity	88 dB +/- 3dB (1 W, 1 m)
Speaker impedance	8 ohm
Dispersion	90° horizontal / 80° vertical
COLOUR	Black or White
Transformer 70v / 100v	50 / 25 / 12,5 / 6,25 W @ 100V 50 / 25 / 12,5 / 6,25 / 3,12 W @ 70V8 Ω
Connector	Pressure Connector
Speaker	8"Woofer and 1"tweeter
Bracket (optional)	U shape metallic adjustable bracket for mounting on wall or ceiling
Dimensions (width x height x depth)	275 x 418 x 255 mm
Weight	6.6 kg

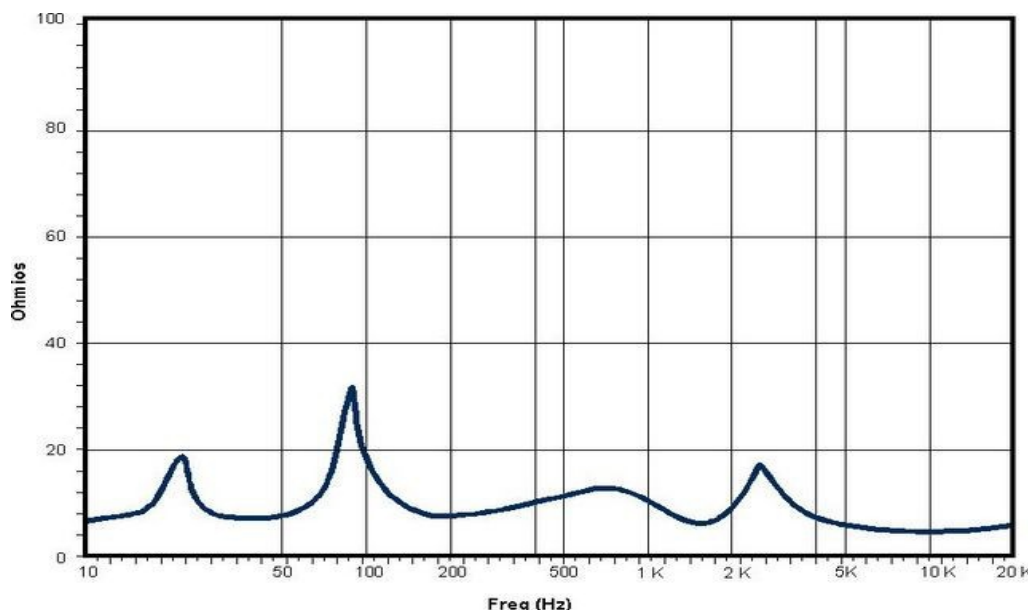
# LS-81T

**Added information:**

Frequency response:



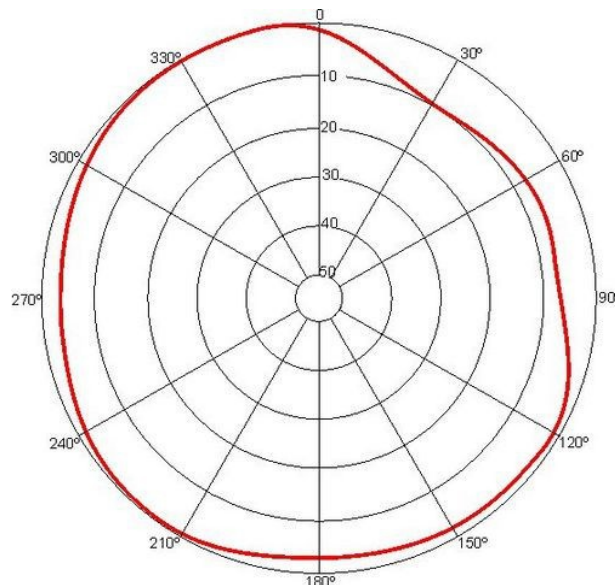
Impedance:



# LS-81T

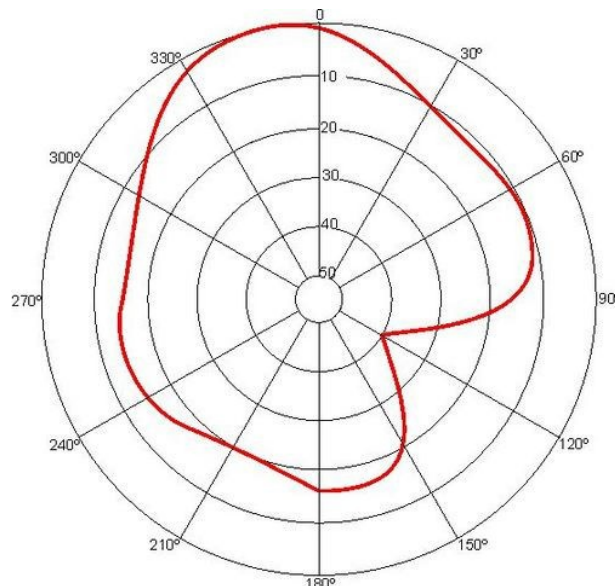
## Vertical Polar Diagram:

Frequency: 1 KHz



## Horizontal Polar Diagram

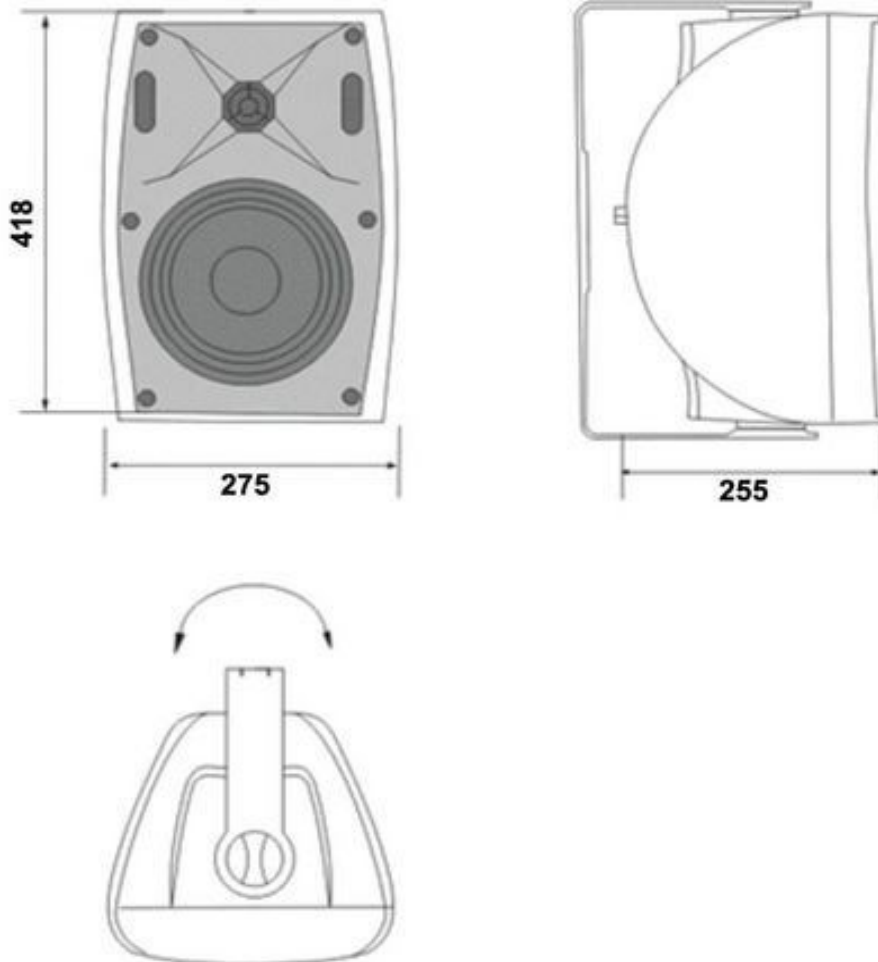
Frequency: 1 KHz



# LS-81T

## Mechanical Drawings:

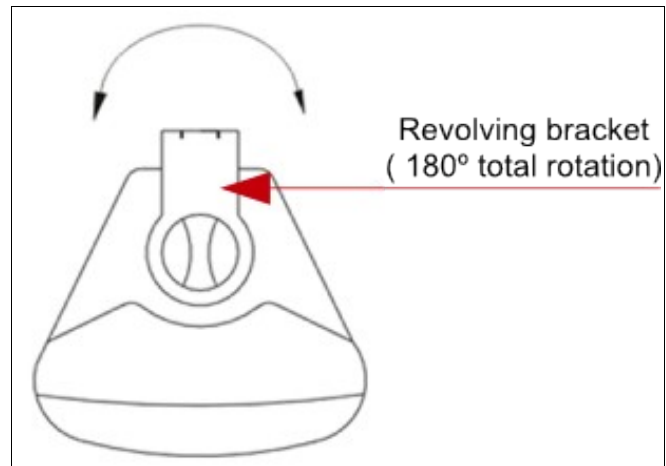
Dimensions in mm



## LS-81T

### U shape bracket:

Horizontal or vertical installation.



### Horizontal Position



### Vertical Position



# LS-81T

### Power taps selector:

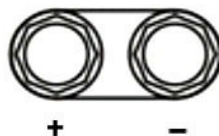
Power taps selection for 70/100V lines



### Banana and Pressure connectors:



**Rojo Negro**



## LS-81T

### SPECIFICATIONS FOR ENGINEERS AND ARCHITECTS

The LS-81T will be compound by a 8" woofer, a 1" tweeter and a crossover filter. It will be connected to a low loss transformer and will have several power taps: 50 / 25 / 12.5 / 6.25 / 3.12 for 70V line and 50 / 25 / 12,5 / 6,25 W for 100V line. It will be connected to 70V / 100V / 8Ω lines. It is recommended to place the acoustic box in vertical position in order to obtain the maximum working functions.

The range of frequencies that it must cover will be comprised between 80Hz and 20kHz with a 88 dB sensitivity measured to 1W and 1m.

The speaker will be installed horizontally and vertically, where the dispersion will be 90° and 80° respectively.

The enclosure will be made in ABS with a metallic grille transparent acoustically. The available colors will be white (RAL 9003) and black (RAL 9005).

The shape of the box will be a 1/6 spare part of a cylinder. It will be provided by an adjustable bracket, which has U shape and could rotate until 180° angle.

The product fulfills the CE marked.

Warranty                      2 years

Product Code                LDALS81TS02

### Sound tests:

#### 1. Power

Pink noise is introduced and amplified trough the whole band width obeying the standar IEC 60268-5. If the maximum power of the speaker is reached, the noise is cut. Then, the speaker is checked. It must not present visible damages or loss of features after 100 hours of working.

#### 2. Sensitivity, frequency range and impedance.

It is introduced several sinusoidal impulses which have different frequency to 1 W of power level from the nominal impedance of the speaker. The average sound pressure level (dB-SPL) is measured to 1 meter of distance with regard to the speaker in a anechoic environment.